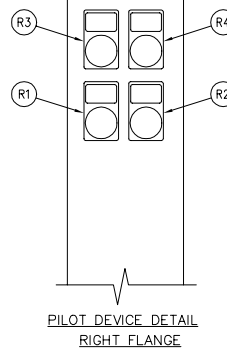
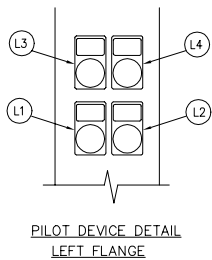


PILOT DEVICE LEGEND  
LEFT FLANGE

- L1. SWITCH IN EMERGENCY LIGHT
- L2. PUSH TO TEST BUTTON
- L3. SWITCH IN NORMAL LIGHT
- L4. EMERGENCY ISO SW. OPEN LIGHT

PILOT DEVICE LEGEND  
RIGHT FLANGE

- R1. START PUSH BUTTON
- R2. STOP PUSH BUTTON
- R3. POWER ON LIGHT
- R4. PHASE REVERSAL LIGHT



VOLTAGE	HORSEPOWER
200V	15-60 HP.
208V	15-75 HP.
230V	15-75 HP.
380V, 415V	15-125 HP.
460V	15-150 HP.

NOTES:  
ALL DIMENSIONS IN INCHES  
AND MILLIMETERS ([ ])

NEMA 2 ENCLOSURE.

DRAWN	SR	2-10-98	<b>METRON, INC.</b> DENVER, CO.
CHECK	KH	2-21-98	
APPD	X.B.	2-21-98	
ENCLOSURE DIMENSIONS MODEL M300 W/TRANSFER SWITCH 56" CABINET ELECTRIC FIRE PUMP CONTROLLER			CD32928C
SCALE N.T.S.			SHEET 1 OF 1